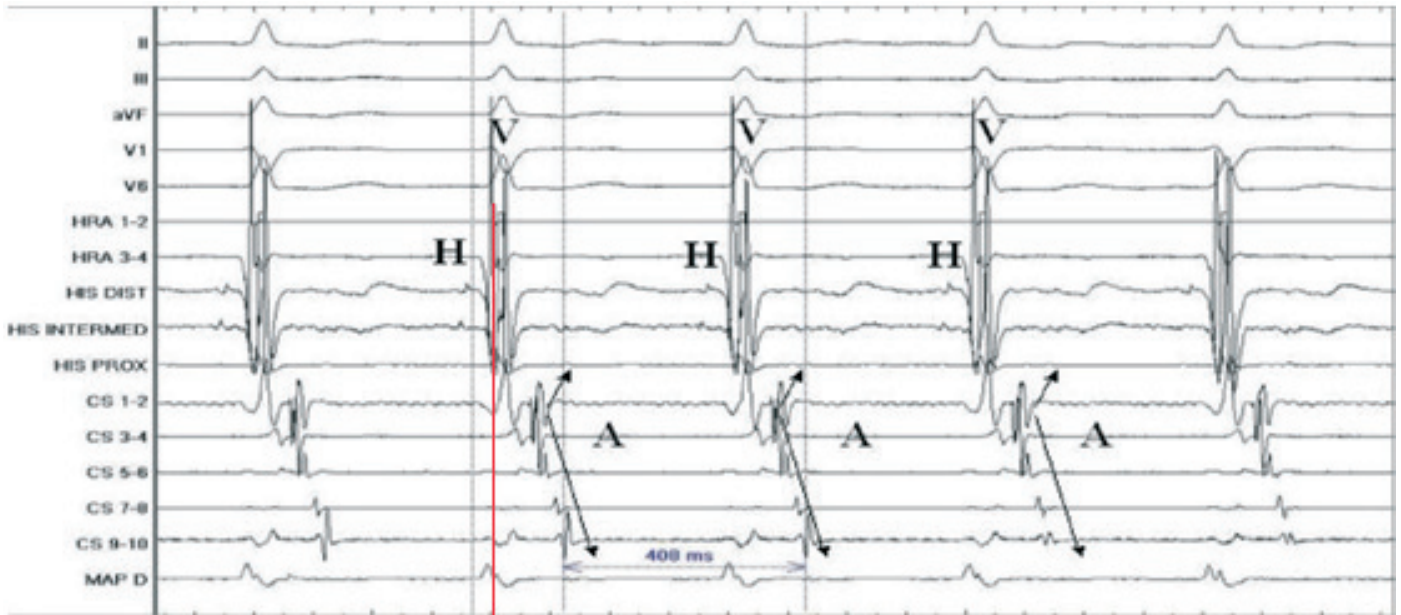


ANSWER TO A QUIZ ON PAGE 114: ELECTROPHYSIOLOGY

Correct answer: B

If you pay attention to the CS catheter, then early activation of the atria on CS 1-2 with respect to CS 9-10 attracts attention.

MAPD was installed in the left anterior region of the mitral valve, with tachycardia, the phenomenon of "fusion" takes place, with earlier activation relative to CS (red line)



Ayan Abdrakhmanov, Zhandos Esilbayev
Department of Interventional Arrhythmology
National Research Cardiac Surgery Center
Nur-Sultan, Kazakhstan

Peer-review: Internal

Conflict of interest: None to declare

Authorship: A.A. and Z.E. equally contributed to preparation of quiz

Acknowledgement and funding: None to declare

Address for Correspondence: Ayan Abdrakhmanov, Department of Interventional Arrhythmology, National Research Cardiac Surgery Center, Nur-Sultan, Kazakhstan, Email: ayan-3@mail.ru

Received: 24.01.2019 **Accepted:** 25.01.2019

Copyright © 2019 Heart, Vessels and Transplantation