

## Quiz: Echo imaging

### Case

A 55 years old male patient with severe coronary artery disease was sent to our echocardiography lab for preoperative evaluation. Figure 1 and 2 were taken from his echo recordings (video 1 and 2). What is the differential diagnosis in such picture?

- A. A dilated aortic root
- B. A dilated coronary sinus with possible persistent left superior vena cava
- C. Ostium primum atrial septal defect
- D. A flail mitral valve

Zehra Ilke Akyildiz<sup>1</sup>, Oben Baysan<sup>2</sup>

<sup>1</sup>Private Cardiology Clinic, İzmir, Turkey

<sup>2</sup>Güven Hospital, Ankara, Turkey

**Peer-review:** Internal and external

**Conflict of interest:** None to declare

**Authorship:** Z.I.A, O.B. are equally contributed to management of case and preparation of article

**Acknowledgement and funding:** None to declare

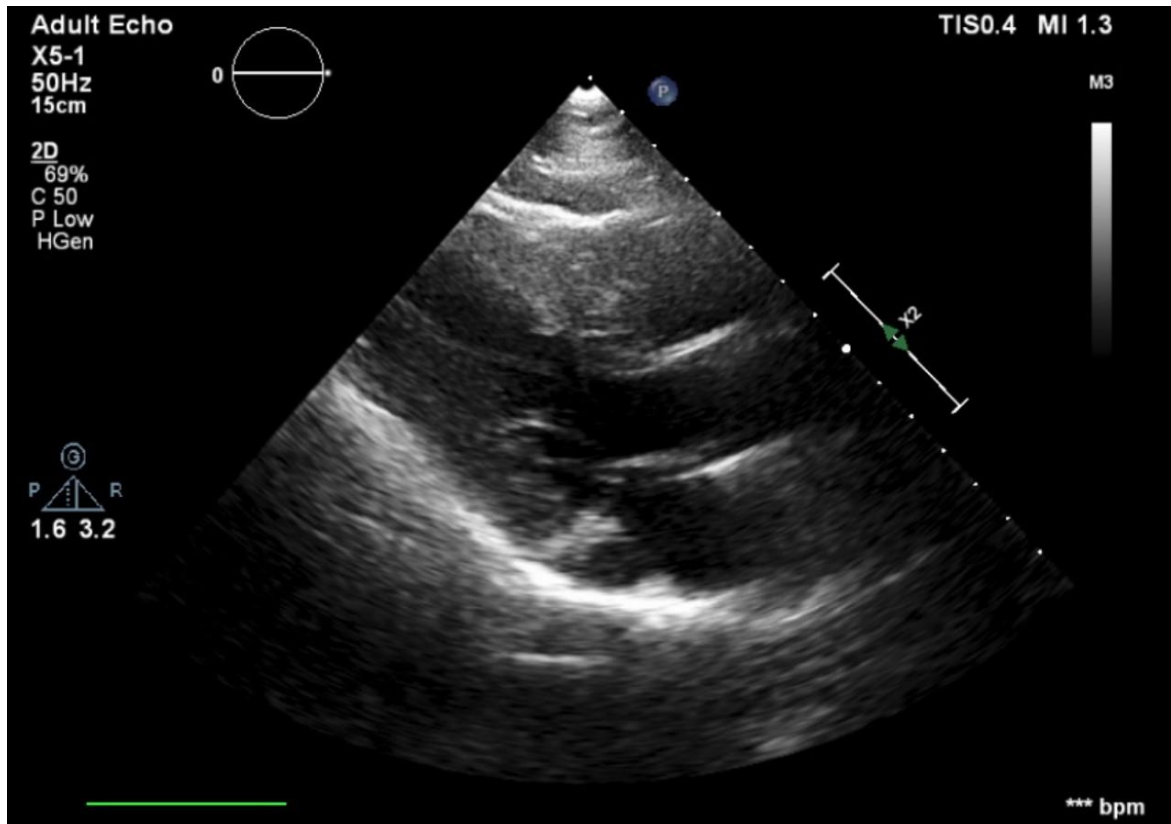


Figure 1. Echocardiographic image  
Video 1. Echocardiographic images

**Address for Correspondence:** Ilke Zehra Akyildiz, Izmir, Turkey Email: ziakyildiz@hotmail.com

**Received:** 13.11.2020 **Revised:** 06.12.2020 **Accepted:** 06.12.2020

**Copyright ©2020 Heart, Vessels and Transplantation**

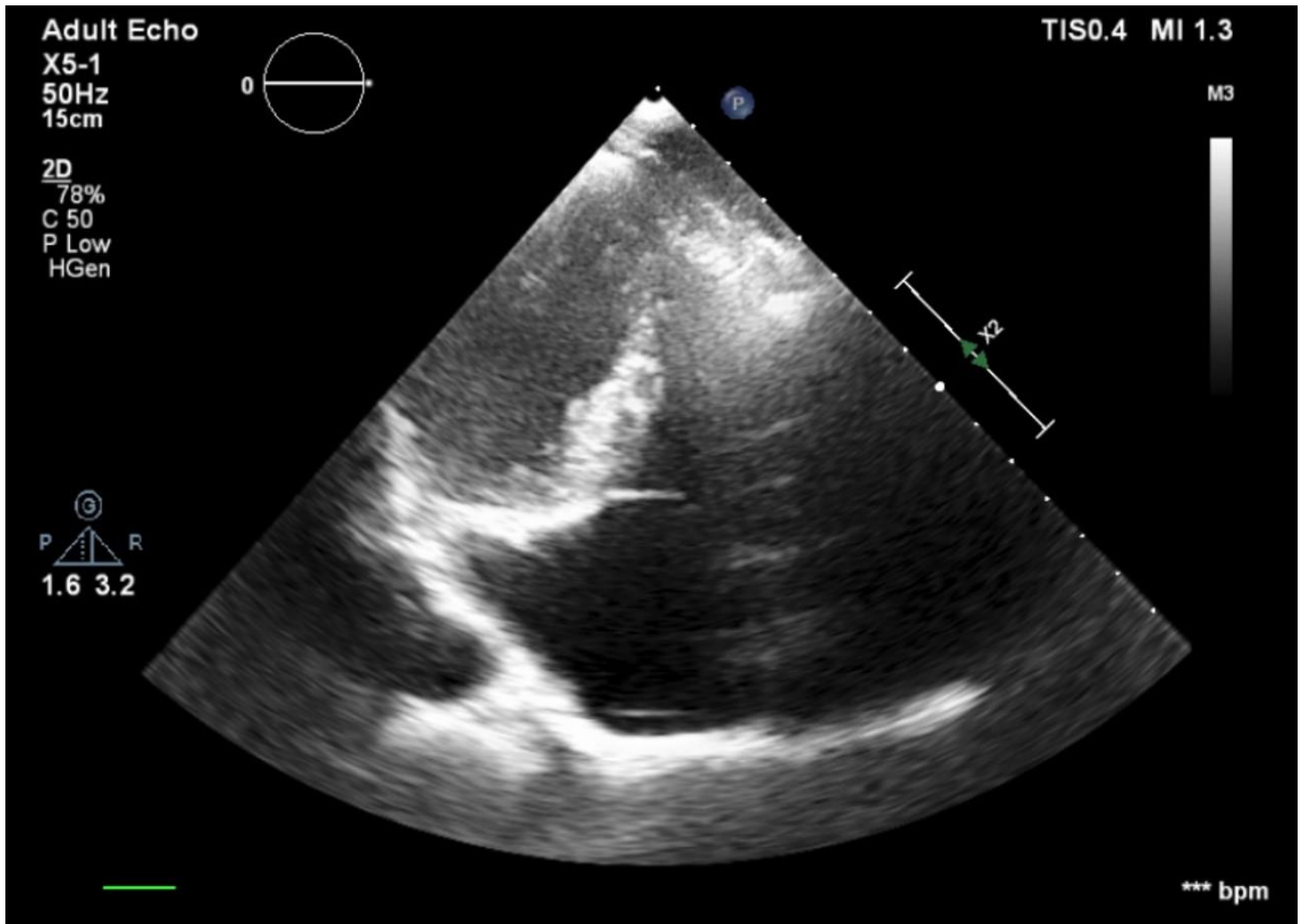


Figure 2. Echocardiographic image  
Video 2. Echocardiographic images